

RCV

Designer Radiators



Premium Quality Designer Radiators
Up to 13,725 BTU/HR on Heating
White Enameled Appliance Finish
Side Panels and Top Grilles Included

PURMO 
clever heating solutions

RCV Designer Panel Radiators

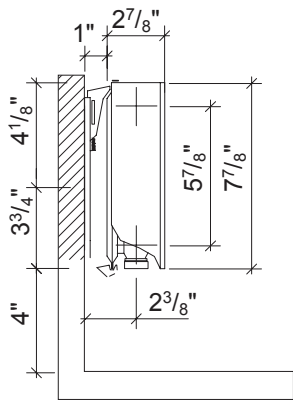
RCV designer radiators bring an upscale look to heating installations with their horizontal profile and contoured features. RCVs blend seamlessly into both traditional interiors and more modern decors. With a variety of heights, up to 36", they can be installed in almost any location. Their high output per foot enables less wall space to be occupied giving more freedom to locate furniture and decorations.

Homeowners benefit from RCV's ability to provide radiant and convective heat. With radiant heat warming objects and convective heat warming the room air, RCVs heat spaces faster and maintain more even room temperatures. Convector fins welded onto the interior radiator plates help increase heat transfer from the boiler, enabling the heating system to operate at peak efficiency. Each radiator is supplied with a thermostat control valve body installed in the radiator. When a thermostatic control head is included, the radiator will automatically adjust the flow to the radiator depending on room temperature preventing wasteful overheating of the room.

Built to Purmo's exacting standards, RCV offers designer style without sacrificing performance.

Each RCV panel is equipped with an internal thermostatic valve body, contoured side panels, top grille, mounting brackets and matching vents and plugs. You'll appreciate the lasting comfort of RCV's ten year warranty.

Type 21

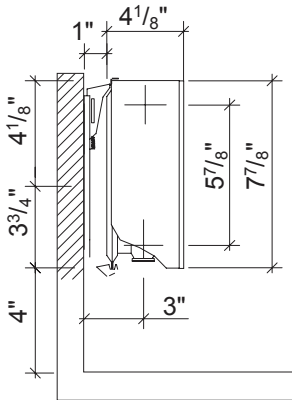


Horizontal Panels Type 21 6 Pipe Connection Panels (1/2")

Radiator Model	Type	Height (in)	Length (in)	Output (BTU/HR) @ 180°F	Output (BTU/HR) @ 140°F	Weight (lbs)	Water Content (gal)	Equivalent Baseboard @ 180°F (ft)
RCV21 0824	21	8	24	1,551	868	17	0.38	2.7
RCV21 0836			36	2,325	1,301	26	0.57	3.9
RCV21 0848			48	3,103	1,737	35	0.76	5.2
RCV21 0872			72	4,649	2,602	52	1.14	7.7
RCV21 0892			92	4,941	3,325	66	1.46	8.2

Outputs based on supply temperatures shown, 20° F ΔT and 68° F Room Temperature

Type 22

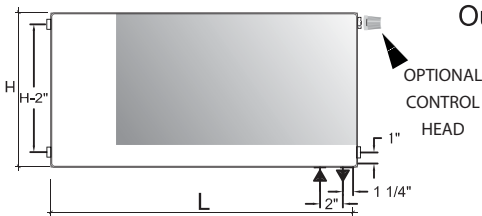


Horizontal Panels Type 22 6 Pipe Connection Panels (1/2")

Radiator Model	Type	Height (in)	Length (in)	Output (BTU/HR) @ 180°F	Output (BTU/HR) @ 140°F	Weight (lbs)	Water Content (gal)	Equivalent Baseboard @ 180°F (ft)		
RCV22 1616	22	16	16	2,168	1,213	18	0.47	3.6		
RCV22 1624			24	3,248	1,818	27	0.70	5.4		
RCV22 1632			32	4,333	2,425	36	0.93	7.2		
RCV22 1640			40	5,416	3,031	45	1.17	9.0		
RCV22 1648			48	6,499	3,637	54	1.40	10.8		
RCV22 1656			56	7,581	4,243	63	1.63	12.6		
RCV22 1664	22	24	64	8,664	4,849	72	1.87	14.4		
RCV22 1672			72	9,747	5,455	81	2.10	16.3		
RCV22 2416			16	3,048	1,706	35	0.69	5.0		
RCV22 2424			24	4,577	2,562	52	1.04	7.6		
RCV22 2432			32	6,101	3,415	69	1.39	10.2		
RCV22 2440			40	7,625	4,268	86	1.73	12.7		
RCV22 2448			48	9,149	5,121	104	2.08	15.3		
RCV22 2456			56	10,673	5,974	121	2.43	17.8		
RCV22 2464			64	12,201	6,829	138	2.77	20.3		
RCV22 2472			72	13,725	7,682	155	3.12	22.9		
RCV22 3616			22	36	16	4,240	2,563	46	0.95	7.4
RCV22 3624					24	6,362	3,846	68	1.43	11.2
RCV22 3632	32	8,480			5,126	90	1.90	14.9		
RCV22 3640	40	10,602			6,409	112	2.38	18.6		
RCV22 3648	48	12,724			7,691	135	2.85	22.3		

Outputs based on supply temperatures shown, 20° F ΔT and 68° F Room Temperature

Type 21 & 22



6 Pipe Connection Panels (1/2")



Standard Components

- Internal thermostatic valve body
- Contoured side panels and top grille
- Adjustable mounting brackets
- Matching plugs and vents

Now offering the option for you to purchase radiators in a variety of colors. Please contact us for full details.

